



LONG BAY



REAL PEOPLE. REAL PRODUCTS. REAL SOLUTIONS.
www.a-s.com



Product...

BENEFITS

- Offered in bays over 65' (50' bay typical)
- Roof loading above 70 psf
- Available with machine-seamed Standing Seam Roof systems and Built-Up, Single-Ply and Multi-Ply roofing systems
- Available in gray and red
- Reinforced die-formed seats for stability and strength
- Products are patented and AISC certified

FEATURES

- Superior strength-to-weight ratios
- Machine rolled for accuracy and tighter tolerances
- Stiffer and lighter than bar joists with less sweep and warp
- Greater design flexibility– can be used with hard wall and metal cladding applications
- Bolted connections to primary frames standard, with optional welded connections available
- Long Bay System has proven erection cost savings over other types of joist construction

For additional information, see the Architectural Guide to Specifying the Long Bay System.

For the Erector

- Stable sections allow for easier handling during unloading and erection
- No welding required for placement or attachment
- Bolted end seat attachments to primary framing for quick, safe and verifiable connection
- 40 percent less bridging than typical bar-joist installations
- Industry standard self-drilling fasteners are used for all bridging attachments and "B" deck applications
- Wide, flat-top chord surface enables simple, easy and stable clip attachment for standing seam roof applications

For additional information, see the brochure: Why Erectors Prefer the Long Bay System.

For the Builder

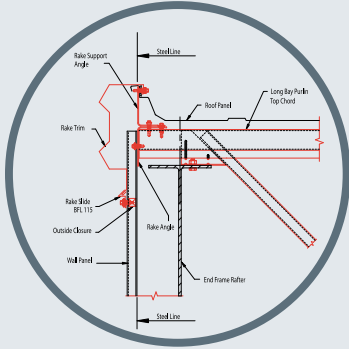
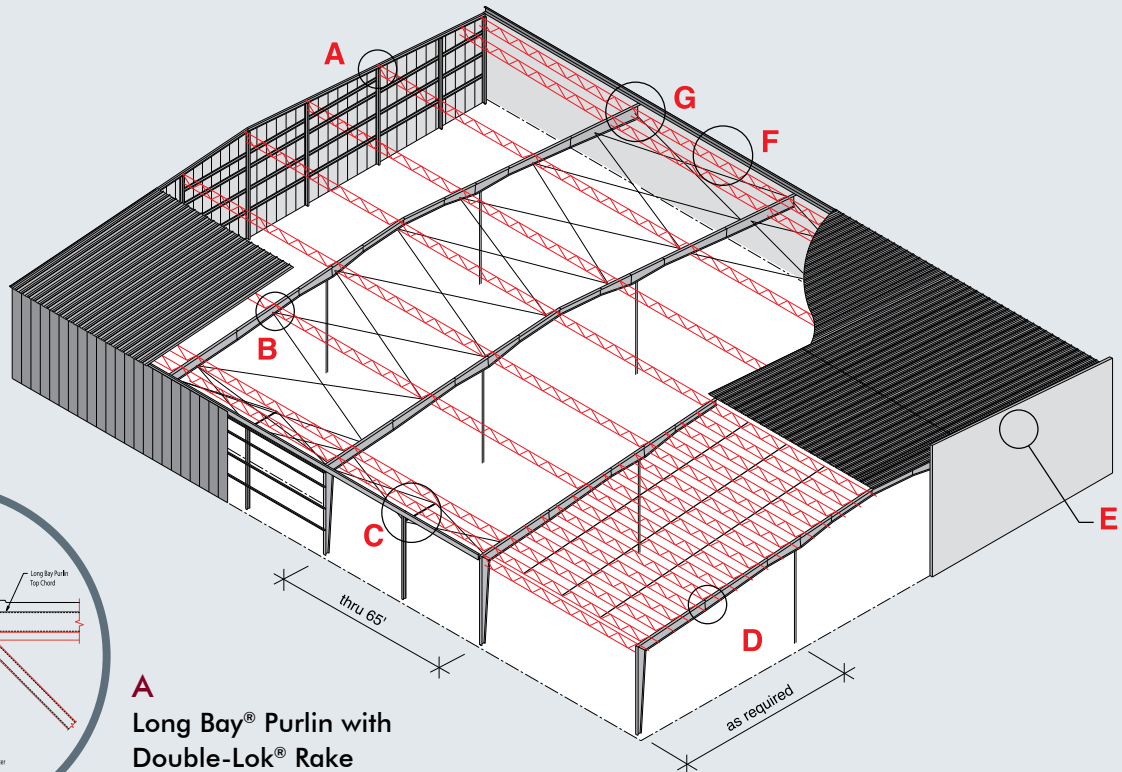
- Single-source supply of complete building system allows for better control and planning of your construction schedule
- Quality assurance of predictable structural performance from an AISC MB category certified manufacturer
- Consistent pricing and predictable deliveries as compared to traditional bar joists
- Allows the Builder to be competitive in the warehouse and distribution markets where large bay spacings are required

For the Owner

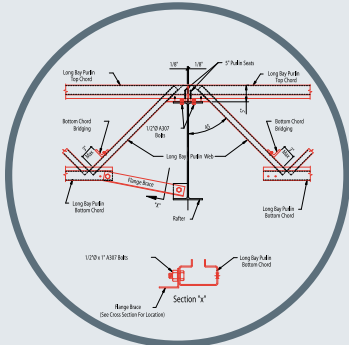
- Faster occupancy due to single-source control, predictable delivery and ease of erection
- Reduces number of interior columns to provide larger, unobstructed areas for maximum usage of floor area space
- Lowers overall in-place construction costs as compared to other preengineered building systems because of reduced foundation costs and ease-of-erection
- Assurance of predictable quality from an AISC MB category fabricator with the backing of a billion dollar integrated steel manufacturer

Testing & Quality Assurance

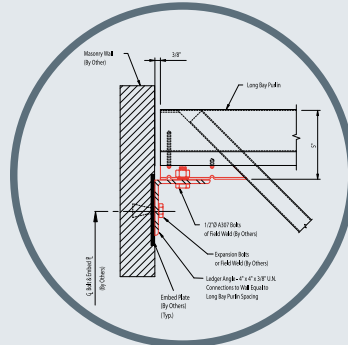
- Produced in a certified AISC MB category manufacturing facility
- Statistical sampling of all Long Bay joist tested for specified design loads
- Tested with thru-fastened and Standing Seam Roof applications
- Factory Mutual (FM) ratings are available per your specific requirements



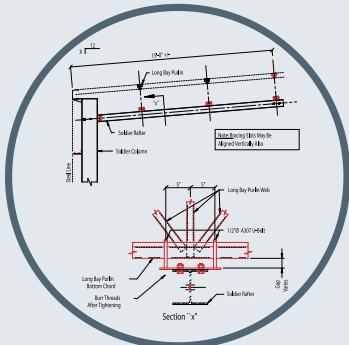
A Long Bay® Purlin with Double-Lok® Rake Condition (On Module)



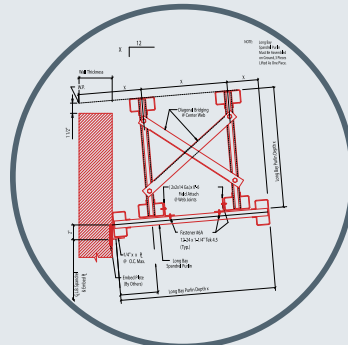
B Flange Brace Connection



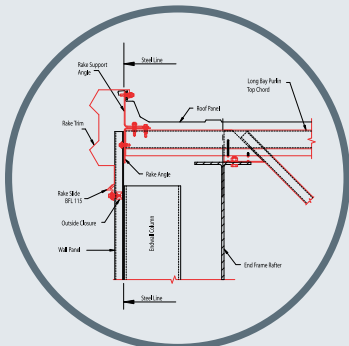
E Long Bay® at Masonry Parapet



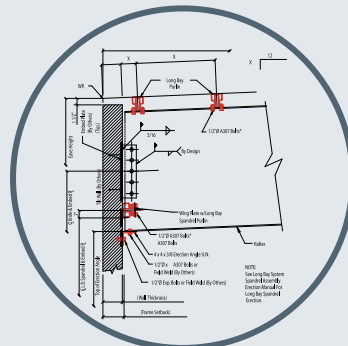
C Long Bay® Connection at Low Side Soldier Column



F Long Bay® Spandrel Purlin at Masonry Sidewall



D Long Bay® Purlin with Double-Lok® Ending Rake Condition (On Module)



G Long Bay® Spandrel at Main Frame (with Masonry Wall)



A&S Building Systems
1880 Hwy. 116
P.O. Box 53
Caryville, TN 37714

P: 800.274.2100 or 865.426.2141
F: 865.426.2011
sales-marketing@a-s.com

Descriptions and specifications contained herein were in effect at the time this publication was approved for printing. In a continuing effort to refine and improve products, A&S reserves the right to discontinue products at any time or change specifications and/or designs without incurring obligation. To ensure you have the latest information available, please inquire or visit our website at www.a-s.com. Application details are for illustration purposes only and may not be appropriate for all environmental conditions, building designs or panel profiles. Projects should be designed to conform to applicable building codes, regulations and accepted industry practices. If there is a conflict between this manual and project erection drawings, the erection drawings will take precedence.